

Twickenham & Richmond TRIBUNE

Contents

- TickerTape
- COVID-19
- Doodlebugs over Twickenham
- Richmond College campus new 212-home development
- Keep wildlife wild
- Community skip scheme
- Hampton North Ward News
- Twickers Foodie
- Review
- Open Day at the Mary Wallace Theatre
- Traveller's Tales
- WIZ Tales - Bangladesh
- Richmond upon Thames students celebrate GCSE results

Contributors

- Simon Fowler
- The Royal Parks
- Councillor Geoffrey Samuel
- Alison Jee
- Mark Aspen
- Royal Shakespeare Society
- Doug Goodman
- World InfoZone
- Brentford FC
- RFU
- GMB Union
- WHO
- LBRuT

Editors

Berkley Driscoll
Teresa Read



26th August 2022

T&R

TickerTape - News in Brief

Annual Full of Life Fair returns bigger and better for 2022

Richmond Council's annual Full of Life Fair is back at Twickenham Stadium on 23 September!

The Fair expects to welcome over 1,000 residents, with a bigger offer than ever to provide older residents and carers with the information they need to age well, live more independently in their own home and connect with the support available in the community. Registration to attend is now open. Find out more [HERE](#)

Bus strikes - Sunday 28 and Monday 29 August

Strike action is planned by London United drivers on Sunday 28 and Monday 29 August, which is expected to affect 63 bus routes, about 10 per cent of the bus network, mostly in west and southwest London, and parts of Surrey. This will include some routes serving the Notting Hill Carnival.


During this time, please plan ahead, [check before you travel](#) and leave more time for your journey.

Services will run as normal:

- On the night of Saturday 27 August until approximately 05:00 on Sunday 28 August
- From 06:00 on Tuesday 30 August

Most other bus, Tube and rail services will run as normal, but are expected to be busier than usual.

To see a full list of the affected routes and for the latest information, please visit TfL's bus strike [webpage](#).



skyelectrical

Replacing your halogen recessed lights with LEDs will:

- ✓ SAVE ENERGY
- ✓ SAVE YOU MONEY
- ✓ PROVIDE BETTER LIGHTING

So...

- ✓ CALL US TODAY FOR A FREE HOME ASSESSMENT AND QUOTE

For a timed appointment please call Sky Electrical on 020 8894 1799
22 Fifth Cross Road, Twickenham, Middlesex, TW2 5LF
www.skyelectrical.co.uk

020 8894 1799
info@skyelectrical.co.uk

Covid-19

By Teresa Read

COVID-19 Weekly Epidemiological Update

Published 24 August 2022: data as of 21 August 2022

Globally, the number of new weekly cases decreased by 9% during the week of 15 to 21 August 2022, as compared to the previous week, with over 5.3 million new cases reported.

As of 21 August 2022, 593 million confirmed cases and 6.4 million deaths have been reported globally.

At the regional level, the number of reported new weekly cases decreased or remained stable across all six regions: the African Region (-25%), the European Region (-20%), the Region of the Americas (-18%), the South-East Asia Region (-17%), the Eastern Mediterranean Region (-13%), and the Western Pacific Region (+2%).

The number of new weekly deaths increased in the African Region (+183%) and the Western Pacific Region (+8%), while it decreased or remained stable in the European Region (-30%), the Region of the Americas (-15%), the South-East Asia Region (-11%), and the Eastern Mediterranean Region (+3%).

At the country level, the highest numbers of new weekly cases were reported from Japan (1,476,374 new cases; +6%), the Republic of Korea (884,373 new cases; +2%), the United States of America (612,378 new cases; -13%), Germany (240,998 new cases; -19%), and the Russian Federation (235,385 new cases; +39%).

The highest number of new weekly deaths were reported from the United States of America (2,714 new deaths; -13%), Japan (1,624 new deaths; -1%), Brazil (1,105 new deaths; -26%), Italy (677 new deaths; -26%), and Australia (490 new deaths; -9%).

European Region

The European Region reported over 1.3 million new cases, a 20% decrease as compared to the previous week.

Three countries in the Region reported increases in new cases of 20% or greater, with some of the highest proportional increases observed in Ukraine (5,439 vs 3,893 new cases; +40%), and Jersey (197 vs 143 new cases; +38%). The highest numbers of new cases were reported from Germany (240,998 new cases; 289.8 new cases per 100,000; -19%), the Russian Federation (235,385 new cases; 161.3 new cases per 100,000; +39%), and Italy (150,922 new cases; 253.0 new cases per 100,000; -22%).

Over 40,000 new weekly deaths were reported in the Region, a 30% decrease as compared to the previous week. The highest numbers of new deaths were reported from Italy (677 new deaths; 1.1 new deaths per 100,000; -26%), Spain (461 new deaths; 1 new death per 100,000; -20%), and the Russian Federation (435 new deaths; <1 new death per 100,000; +13%).

IN THE NEWS

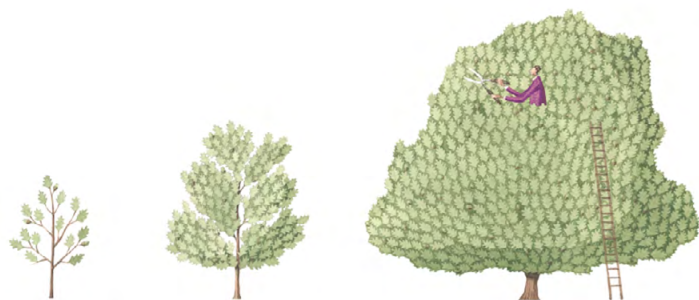
World Health Organization: This week, we crossed the tragic milestone of 1 million reported deaths so far this year. We cannot say we are learning to live with COVID-19 when 1 million people have died with COVID-19 this year alone, when we are two-and-a-half years into the pandemic and have all the tools necessary to prevent these deaths.

The Guardian: Routine Covid tests in English hospitals to be scrapped next week.

Sky News: Man tests positive for monkeypox, COVID and HIV after holiday to Spain.

Reuters: German Health Minister expects coronavirus renewed wave in autumn.

Sky News/Reuters: Novak Djokovic missing US Open over Covid vaccine status and travel rules would be 'a joke', says John McEnroe



The Tree Agency

darryl parkin

The Treehouse
25 King Edwards Grove
Teddington, Middlesex TW11 9LY
Telephone 020 8274 0107
Mobile 07960 123580
Fax 020 8274 0119
info@thetreeagency.co.uk
www.thetreeagency.co.uk



The Tree Agency

Doodlebugs over Twickenham

By Simon Fowler

Over the summer of 1944 London and the South East suffered from attacks from the V1 – a flying bomb, nicknamed the Doodlebug, and the larger more destructive V2 rockets. Some 27 doodlebugs landed in Twickenham. Peter Pyke, then aged fourteen, remembered one such attack

As young lads, we were always on the look-out for bomb or shell splinters known as shrapnel, and every lad of our age owned a collection of such relics. One night, our local swimming baths received a direct hit by a doodlebug and next morning, a few of us ventured down to the site to find such devastation. Our swimming instructor, a Mr. Gammon was killed in this incident which saddened us immensely. We walked down King Street and were prevented from going any further past the then Kings Head site by notices and ARP wardens and were told to GO back home. So, we walked down Church Street past blood-soaked wads of cotton wool which reminded us that this was a serious incident.



Just outside 15-18 Church Street which was once the Adana factory to our amazement we discovered a very large piece of the V-1 that had caused the damage. It was about two metres long and had German writing on it. There was nobody around so we thought ‘what a great addition to our collection.’

There were four of us in the group so with two each end, we hoisted the object up and proceeded on our way hoping that we would not meet any officials. It was quite heavy and after a few stops to rest, we got to the end of Oak Lane, just outside St. John’s Hospital, when a police car came along and seeing us youngsters carrying this booty, they stopped and asked us just what we thought we were doing.

They immediately commandeered the fragment of flying bomb and told us that if after examination we still wanted it, we could collect it from the Police Station when notified. We didn’t hear anything else about this, but the article was on show for a few years in the Police Station yard, but of course, by this time we were more interested in other things...

My Pyke is probably referring to the devastation caused by a V1 which landed on the corner of Water Lane and the Embankment on 19 June 1944 before exploding on Gotham Villas, a three-storey house, instantly killed the six people who were living there. Four other people were also killed in the blast. Freda Hammerton, whose father was one of the victims, vividly remembered: ‘the awful of dust and rubble everywhere, the middle and the mess and the share misery.’

Based on an article in the BOTLHS Newsletter No 141.

Former Richmond College campus to become new 212-home development

Plans to build a new housing scheme comprising over 100 new affordable homes on the site of the former Richmond upon Thames College have been unanimously approved by the council.

Latimer, the development arm of Clarion Housing Group, has been given the green light to demolish the ex-campus buildings and construct a new sustainable mixed-tenure scheme of 212 quality new homes – over half of which will be affordable for local people.

The developer acquired part of the Egerton Road campus from the college back in 2018 before submitting initial plans to breathe new life into the site.

It then submitted a revised planning application to boost the total number of homes at the scheme from 180 to 212 and increase the proportion of affordable homes from 19% to 51%. The revised proposals were unanimously approved by councillors on Thursday 19 August.

The new homes, designed by BPTW architects, form part of the borough's wider £80m college project which also includes a replacement college campus, two new schools, an extended sports hall and a science hub.



Students moved into the new campus on Langhorn Drive in Spring 2020 and Latimer's approval for the new housing scheme will now facilitate further progress on the wider project – with construction work on the homes expected to start early next year.

The developer will build 28 homes for affordable rent and a further 80 for shared ownership, providing vital housing options for local people. The remaining 104 homes will be sold privately.

The completed scheme will be one of the first new residential housing developments in the borough with 'net zero carbon compatible' homes. All homes will be built with high levels of insulation and ventilation efficiency, with any carbon emissions offset by energy generated by photovoltaic solar panels.

Proposals for the scheme will ensure that any loss of habitat will be replaced or enhanced to care for local protected species. Biodiversity will be boosted through wildlife-friendly

landscaping, rain gardens and an ecological corridor of new trees and shrubs.

There will also be over 100 parking spaces for residents and 22 electric vehicle charging points. The developer has already installed a publically accessible Brompton bike docking station, available at discounted rates to local people to provide more sustainable transport options in the local area.

As well as the homes, the scheme will deliver improved public realm, a new communal courtyard and a raft of community benefits for residents and local people – including employment opportunities and youth engagement.

Richard Cook, Group Director of Development at Clarion Housing Group, said:

“We are delighted to gain planning consent to build this highly sustainable scheme in Richmond, delivering vital new affordable homes to local people in the borough.

“We are passionate about making our homes and communities fit for the future. Delivering net zero carbon homes in Richmond will not only make a significant positive impact to the environment but also help residents reduce their energy bills – at a time when this has never been more important.”

Richard Knight, Senior Associate at BPTW, said: *“It’s fantastic to work with Latimer to have these plans approved and realise a shared sustainability aspiration.*

“Strong placemaking was at the heart of the proposals, where each distinct character area within the development integrates with the wider neighbourhood to encourage natural amenity – with plenty of places for play, rest and interaction. We look forward to seeing the scheme realised.”

Latimer engaged with the local community about its emerging proposals for the college site in early 2021 before formally submitting its final planning application to the council.



Keep wildlife wild

We have an amazing array of wildlife in the parks, including several species of bats, free roaming deer, rare invertebrates, grass snakes and great crested newts.

We want visitors to [help nature thrive](#) in the parks by observing wildlife in its natural habitat, rather than seeking an up-close-and-personal encounter.

By not feeding or touching wildlife, visitors can help protect their natural way of life, and in turn experience a deeper connection with nature.

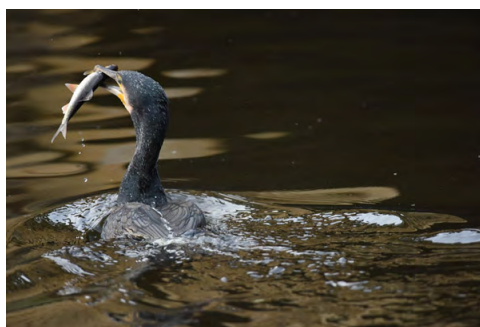
So instead of feeding, we are offering some alternative ways to enjoy the parks' flora and fauna. We have created [bird spotter sheets](#) brimming with fascinating facts for each of the parks, along with [self-led wildlife trails](#).

The parks are a natural source of food

There is lots of natural food in the parks for wildlife, including insects, wildflower seeds, aquatic plants and grasses. These natural food sources offer wildlife a nutritious, balanced diet all year round that doesn't need to be supplemented by public feeding.



Grey heron with a fish



Cormorant with a fish



Herd of deer grazing

We proactively manage the parks to help nature thrive, as set out in our [10-year Biodiversity Framework](#). Some examples include creating and managing wildflower meadows and reedbeds, planting new trees, and restoring ponds for invertebrates and amphibians. As well as creating resilient habitats that benefit biodiversity, these measures boost the natural supply of food available for wildlife in the parks.

Why can feeding be harmful?

The Royal Parks are some of the busiest parks in the country, and the amount of feeding that is taking place is doing more harm than good, upsetting the delicate ecosystem.

Excessive feeding causes problems because:

- Water quality can be reduced through uneaten soggy bread and faeces from large numbers of waterfowl. Reduced water quality can harm aquatic wildlife
- Feeding can encourage large groups of gulls and crows. They bully other birds, stealing their eggs and killing their chicks
- Leftover food can attract rats
- Feeding attracts large numbers of waterfowl, which leads to overcrowding and stress, and helps wildlife diseases spread.



Council trials new community skip scheme

Residents will have the opportunity to declutter their homes for free by using one of the new mega skips on Saturday 10 September.

In an effort to help residents dispose of items responsibly, Richmond Council will trial the use of community skips at two separate locations in the borough. The Council offers a bulky waste collection service but residents will now have the opportunity to bring their old possessions to the community skip to recycle their items.

The skips will be located at Bloxham Crescent in Hampton and at the corner of Stillingfleet Road and Barnes Avenue in Barnes.

Residents can take up to six items along with them to the mega skip for free, including some electrical equipment and household items like mattresses and sofas.

Council officers will be present on the day to share information about support on offer through the Community Ambassadors project as well as providing recycling tips to residents. An RHP handyman will also be available to help with repairs in communal areas.

Mega Skip Day

- When: Saturday 10 September, 9am to 12 noon
- Where: Skips will be placed at the following locations:

Bloxham Crescent in Hampton

The corner of Stillingfleet and Barnes Avenue in Barnes

As we expect high demand on the day, we will operate on a first come first served basis. When the skips are full we'll let you know via Twitter, check [@LBRUT](#) before you set off.

What you can bring

We are limiting the number of items you can bring to no more than six items per household so that everyone has a chance to make use of the skips.

One bag of rubbish counts as one item, as does one sofa, one mattress etc...

Open to residents of the London Borough of Richmond upon Thames only, proof of address may be required.

We can only accept certain items.

YES please to:

- Household waste only: the skips are for household waste only – no business waste
- Carpet
- Computers and IT equipment
- Furniture - e.g. mattresses, sofas, tables etc
- Microwaves and small electrical appliances
- Batteries (but no car batteries)
- Bicycles
- Cardboard
- Black bags

NO thank you to:

- Hazardous objects or dangerous materials/chemicals: please do not bring anything hazardous in such as sharp objects, needles, dangerous chemicals, plasterboard, flammable liquids and asbestos
- Paint
- Concrete
- Car batteries
- Cement, rubble or hardcore
- Plasterboard
- Engine oil/cooking oil
- Fridges or other large electrical appliances

Other waste services

If you miss the mega skip day and want the council to collect your bulky items you can [book a bulky item collection](#).



Richmond Town Centre's 'Safe Space' remains open outside Richmond Station every Friday and Saturday night

Richmond Council and its partners are reminding residents that the newly opened 'Safe Space' is on hand to support anyone who might be feeling vulnerable while out and about in Richmond Town Centre between 9pm and 1am on Friday and Saturday nights.

The Safe Space is for anyone who might need help or advice. The police are present at the gazebo to intervene if required. Visitors to the Safe Space will also be able to find information on White Ribbon, domestic abuse services and the Railway Guardian app.

The initiative is a joint venture between Richmond Council's Community Safety service, Richmond Safer Neighbourhood Teams, British Transport Police, South Western Railway Rail Community Officers and Street Pastors.



Community Toilet Scheme (CTS) Twickenham Green

Twickenham Cricket Club
The Cricket Pavilion, The Green, Twickenham, TW2 5TU
020 8894 3110

Opening hours:

Monday/Wednesday/Friday - 10am to 5pm

Saturday 11am to 10pm

Sunday when cricket is being played

(Also open when there is a cricket match and the pavilion is in use)

The Cricket Pavilion does not seem to display the obligatory CTS LBRUT sign. A permanent, visible TOILET notice is needed in the central area of Twickenham Green.

Hampton North Ward News

Councillor Geoffrey Samuel

R70 and 111

As mentioned in the August Newsletter Nick Rogers, our GLA member, has arranged a meeting in the middle of the month for him and me with Transport for London and Abellio. Although, to my regret, this “meeting” will be held on the computer it does give both of us an opportunity to raise the issues that concern residents. The meeting will concentrate on the decline in the 111 service since Abellio took over the route some weeks ago but the R70 is also on the Agenda. To enable me to represent residents please send me to gjshn@btinternet.com any issues or recent problems with these two routes which you have experienced.

Around Hampton Square:

1. THE WHITE HOUSE

Although the Council has been fully involved for well over two and a half years there is still no return to the full range of courses, classes and activities. The café may be “open” but that is only for a few hours three days a week and without all the food and drink previously available. A few activities remain. A couple of weeks ago I met the Consultants whom the Council has appointed to ‘give them advice’. I support local residents who want – and deserve – a fully active community centre

2. THE YOUTH CENTRE

The Council took back control in April and provides activities and support for young people aged 10 to 19. This includes climbing, pool, football, basketball, boxing, computer games, music production and creative arts. During the summer holidays it has hosted government-funded Holiday activities etc. I can provide further information for interested residents

3. THE RECYCLING CENTRE

I receive almost daily complaints and lots of photos from residents complaining about the fly-tipping, debris and mess- more complaints than ever. The Council now provides CCTV at six centres – but not Tangle Park. I think it is time to tell the Council that they must manage it – or move it.

4. WATER FEATURE

One of the most popular features of the Square-particularly with young children – and very well used in warm weather. But not this year. The Council failed to run it – although they did belatedly expect to re-open it- just in time for the hosepipe ban.

PARKING RESTRICTIONS IN FULMER CLOSE.

Residents have long wanted restrictions at key pinch points but many residents regard the large number proposed by the Council as extreme overkill. The Council is not able to say how many parking spaces will be lost – nor where displaced parkers will go. I shall be supporting the Residents in their response.

OAK AVENUE CROSSING

A local resident – on behalf of local people – is asking for a crossing near to **South Road** to promote road safety for the many children who cross on their way to school. I support this request. If you are interested I can put you in touch with those organising the petition

TREES

The Council has received a grant of £170,000 towards planting 295 trees over two seasons. 115 were planted last year. So this year 75 are planned In our ward: How have the sites been chosen? A requirement of the grant is that it should be used to “increase the canopy cover “: **Bramble Lane 3, Buckingham Close 1, Buckingham Road 14, Dean Road 3, Dukes Close 2, Fearnley Crescent 6, Hanworth Road 10, Longford Close 5, Loxley Road 1, Oak Avenue 1, Rectory Grove 8, Ringwood Way 2, The Avenue 2, Uxbridge Road 3, Winifred Road 1, Wordsworth Road 13**. To prepare for planting in November tree pit construction will begin this month.

SHORTER ITEMS

- The Council is proposing to instal a bike hangar in **Stanborough Close** and double yellow lines at the junction with **Oak Avenue**. Views?
- Friends of **HAMPTON COMMON** support the Council’s plan to work with ‘Swing Fitness’ to instal a micro-gym on the Common. I can provide details
- The Jockey Club wants Kempton Park to be designated for ‘development’ with real traffic implications for our Ward. Consultation ends on 5th September. Let me know at once if you want to object.
- During the secondment of Sgt Gavin McCandless A/S Grant
- Young is the senior officer for our Ward. Nitrous oxide cylinders remain a problem.
- I have referred to both RHP and the Council complaints that residents of the Travellers site have been fly-tipping in **Bishops Grove**
- Several residents have reported blocked gullies to me: let me know if you have a similar problem.
- Hampton North voted against the blanket 20mph so I receive a number of complaints from those who voted against. Residents in **Hanworth Road and Uxbridge Road** are concerned that, as it is not enforced, there are too many instances of excess speed in both roads.
- The Council is considering parking restrictions in **The Avenue** from The White House to the mini-roundabout. I have insisted that residents in all the places to which the displaced parkers would move are fully consulted.

Boost your child's immunity from COVID-19 before school starts

Residents in and around Twickenham can bring their children to get their COVID-19 vaccination next Wednesday 31 August 2022 at a local pop-up vaccination clinic.

Whilst over 78% of people aged 12 and over in Richmond upon Thames have now had at least one dose of their COVID-19 vaccine, only 13% of children aged 5-11 have received a jab. As we head towards the start of the new school term, the NHS and Richmond Council are hosting a walk-in, pop-up vaccine clinic in Twickenham to make it easier for parents and carers to get their children vaccinated close to home.

Next Wednesday, the pop-up vaccine clinic will visit York House in Twickenham, from 10am to 2pm. The address is York House, Richmond Road, TW1 3AA.

Any child aged between 5 and 11 who is due for their first or second COVID-19 vaccination will be able to have a jab. No prior booking or appointments are required, people can just walk in.

Children will be offered the Pfizer COVID-19 vaccine and each dose is a third of the dose of vaccine that is given to older children and adults. If you are bringing your child for

their second dose, it must be 12 weeks since they had their first dose, or if they are at greater risk of serious illness if they catch COVID-19, it must be eight weeks from their first dose. Please check the [NHS website](#) for more details.

If your child has recently tested positive for COVID-19, you need to wait 12 weeks from the test before getting any dose of the vaccine.

If anyone is hesitant about the vaccine or has any questions, the pop-up clinics are an opportunity to speak to experts from the NHS in a private and confidential environment.

York House is a short walk from Twickenham train station and bus stops with good links to all parts of the borough. Parking is also available.



RichmondLive is back!

A celebration of music, dance and theatre
in Richmond upon Thames

Join VisitRichmond in September for a FREE event in Marble Hill Park
with the newly restored Marble Hill House in the background

Sunday 4 September

RichmondLive Musicals in the Park

2pm-3.30pm

Live performances by:

Boundless Dance

RISE & Combination Dance

Shelle Luscombe

Sunday 11 September

RichmondLive Pop in the Park

2pm-3.30pm

Live performances by:

PowerJam

Jazz Perrin Collective

Ignite Me Theatre

Shelle Luscombe

Sunday 18 September

RichmondLive Classics in the Park

2pm-3.30pm

Live performances by:

Richmond Shakespeare Society

Richmond Community Choir

Marble Hill Dance School

Shelle Luscombe

Come along, have some fun, bring a picnic,
friends and family to support your local arts
and culture in Richmond upon Thames

www.visitrichmond.co.uk

 Visit Richmond, London  VisitRichmond  @Visit_Richmond1

 Visit
Richmond

 LONDON BOROUGH OF
RICHMOND UPON THAMES

Mayor marks the borough's unique connection with Chilean hero

The Mayor of Richmond upon Thames, Cllr Julia Cambridge, marked the borough's special connection with Chilean liberator Bernardo O'Higgins at a ceremony in Richmond on Thursday 25 August.

The Mayor joined a number of delegates from the Chilean Embassy, including Ambassador Susana Herrera and Chile's Military Attaché Colonel Carlos Parra, to mark the 244th anniversary of the birth of a key figure in the Chilean independence movement and head of the country's first national government.



Due to heavy rain on the day, the usual service at O'Higgins Square in Richmond was moved to Gaucho Richmond, a short walk away on the riverside.

At O'Higgins Square in Richmond, a bust of Bernardo O'Higgins stands above an elegant concrete monument designed by Chilean architect Marcial Echenique.

Bernardo O'Higgins lived in Richmond for two years whilst he studied at Clarence House in The Vineyard, which used to be a private school.

Know Your Place Heritage Festival returns for 2022

The Know Your Place Heritage Festival returns to Richmond upon Thames this September with historians set to give a number of talks on a variety of local subjects throughout the month.

This year's festival has events for every interest and all ages groups with walks, talks and family activities all planned.

There will be talks on How Marble Hill was revived, Saving Kew and Old Deer Park, Sid Field: Richmond's lost star, Life on The Edge in Victorian London, The Medieval Manor of Ham and much much more.



[Explore the full programme of events and book your tickets.](#)

BONE IDYLL KINGSTON - LET THE FUN BE-GIN!

Tucked away, near to the entrance to the John Lewis car park in Kingston, is a gin distillery. Yes, you read it correctly, and what's more, it's attached to a great bar that opens in the evenings Wednesdays and Thursdays and during the day at the weekend. **Bone Idyll** is the brainchild of husband and wife team, and highly respected local restaurateurs, mixologists and entrepreneurs Sam and Alex Berry. They already have No.97, Cento Uno and The Hideaway in Surbiton, plus One One Four in Teddington, so they know their local clientele and market well.

We took ourselves there one evening recently to check it out, and I'm very glad we did! I have to start by admitting that the location isn't currently that pretty (it's adjacent to not one, but two building sites), but I'm sure they've done their homework and soon will be in the midst of a thriving residential/business community, packed with potential customers. One can just see the river and Kingston Bridge and once inside, the whole place is vibrant and exciting.



Instead of crowdfunding platforms, the Berrys approached their loyal customers for investment and soon raised the amount required. This alone is a testament to the regard in which they are held locally.



The bar is a fab place to taste the range of Bone Idyll spirits and cocktails. And even if you are off the alcohol (as my husband was that evening) there's still plenty to enjoy. We were shown to our table (with backless bar stools as were all in the bar area, not that conducive to a relaxed evening) by assistant manager Isaac, who kindly gave me a mini tasting of the three different gins **Bone Idyll gins** distilled on site. I started with the **London Bone Dry**: citrusy, but with spicy undertones. Then a sip of the **Blushing Pink Gin**: elegant, with a glint of sweetness, pink pepper spice and floral fruitiness. Now, I'm generally not a fan of pink gins, but this one was by far the best I've tried. Finally the **Barrel Aged Gin** (matured for three months in a whisky barrel.) This one completely threw me! On the nose it

was whisky heavy, but in the mouth, woody, smokey and with notes of cardamom, orris, coriander seed and citrus. I have to confess that I wasn't sure if I liked it or not, but it is definitely very intriguing.

I surprised myself by opting for the Blushing Pink with Pomelo & Pink Pepper tonic (£10 - but there is a happy hour 4-7pm with two for £12). It was delicious and very refreshing and my husband enjoyed a Tea Total mocktail (£7) while we nibbled some nuts and olives (£3.50 per generous serving).





The food menu is, sensibly, pretty

limited, but the standard of food was excellent. We shared two snacks - a chicken and tarragon terrine served with apricot and a herb salad (£10) and a Leek & Stilton 'Cheesecake' with beetroot, honey and walnuts (£8). Both were really delicious but the terrine would be improved I think with the addition of a couple of nice rustic oatcakes. The savoury cheesecake was a revelation, so good, and I'm inspired to experiment at home to try to make something similar.

My husband had a chocolate, raspberry and salted mascarpone tart (£6). It was a very generous size and the fresh mint sprigs on top finished it to perfection. I had a small taste and was very impressed. The tart is the only dessert option on the menu, but there are loads of cocktails that will make an excellent replacement! Isaac suggested I try the Apples All the Way Down (£12 Somerset Cider Brandy, Apple Oleo Saccharum Orinoco Bitters, Pet Nat Cider). Listed on the menu as sweet, it wasn't overly sweet at all, had smoky notes and was divine!

Many of the customers seemed to be popping in to meet up with friends and have a quick drink. The Bone Idyll isn't somewhere I'd recommend for a long, comfortable gourmet evening (the owners have plenty of other options for that!) but it is a fun, innovative and vibrant venue to meet friends and try the delicious spirits. Bone Idyll also distils vodka and rum and has a range of ready to drink cocktails. The full range is available online [here](#) or to buy at the distillery, or the other sites in the group. The launch collection features six key spirits, and five cocktails. Prices are from £30 and there is a range of gift/merchandise available too.

Talking of gifts, the Bone Idyll has just opened a gin school at the Kingston site. You can join a group of ten or book exclusively. In the surroundings of the ten copper pot still, guests can choose from a variety of botanicals and experiment with gin mixology to produce their own, bespoke recipe to take home. And all recipes will be kept on file so reordering is easy. For £125 the 2.5 hour session includes three double G&Ts, Bone Idyll gin tasters, bar snacks, a 70cl bottle of your own gin and a £5 discount to spend at the Bone Idyll shop. I can't think of a better way to enjoy a Christmas gathering and vouchers are available too. What a fabulous gift idea!



Twickers Foodie – By Alison Jee

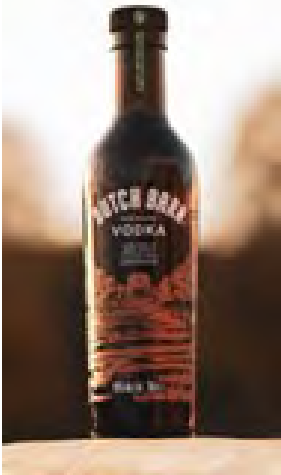
LATE SUMMER DRINK NEWS

I can't believe summer will soon be over; but we certainly can't complain this year about the British weather! In the hope that we will be able to enjoy an Indian Summer too, for the next few weeks, here are some great new products that will, I'm sure, increase your libational enjoyment on these late summer days.

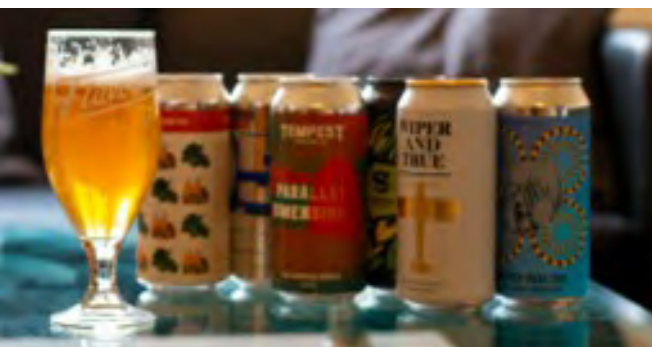
I'm a great fan of cold brew fruit tea; it's refreshing and ultra low calorie! Whittard of Chelsea has recently launched a range of rather delicious and exotic cold brew teas with floral, fruity flavours. Passionfruit, Mango & Peach; Watermelon, Strawberry & Lime; Blackcurrant & Blueberry; and Pink Grapefruit. They're natural, caffeine-free and specially formulated for infusing quickly in cold water. Whittard of Chelsea's Cold Brew range is available in all Whittard stores and online at www.whittard.co.uk



One doesn't immediately think of Yorkshire when it comes to vodka, but I can report that there is some really delicious vodka being distilled 'up north'. **Dutch Barn Orchard Vodka** is an eco-spirit looking to change the way we think about drinks in relation to our planet. It's built on two simple pillars: to make the world's best vodka, and do it in the most sustainable and ethical manner. The liquid is tasted every 20 minutes as it evolves from British apples and is balanced with a touch of potato spirit until it develops into a crisp, clean, and exceptionally smooth vodka at 40% ABV. Made like no other vodka on planet Earth. Dutch Barn Vodka is available in its striking, brown, glass bottle in ASDA and Waitrose, as well as online from Amazon and the Dutch Barn Orchard Vodka at a RRP £29



I've always been a great fan of vermouth, and this latest one from top Italian company Cocchi is fabulous. **Cocchi Extra Dry** is the perfect addition to classic cocktails such as the Martini or the Bamboo but is also equally at home served long with elderflower tonic, soda water or just sipped over ice. **Cocchi Vermouth di Torino Extra Dry**, 50cl, 17% ABV – RRP £19 is available at various retailers including Waitrose. According to Roberto Bava, MD, Cocchi "It's been a long process and it took a lot of work to create a vermouth that would have personality without overpowering the delicacy of a gin and vodka." Well, they've certainly managed to do this in style!



Fancy a beer from New Zealand, or the leaf strewn roads of New England? Well, thanks to **Flavourly**, the online craft beer specialist, you can do just that, and with no airport delays, in the comfort of your own home. All these beers have been exclusively created by the UK's top breweries! Brewed as small batch 'taste exploration' exclusives, the **Small Batch Originals** range showcases the very best the UK brewing industry has to offer. The inaugural offering

of the Small Batch Original range comprises six new and exclusive 440 ml beers from **Wiper And True**, **Brew By Numbers**, **Siren Craft Brewery**, **Tempest Brewing Co**, **Anspach & Hobday** and **Wild Card Brewery** and will be sold exclusively from Flavourly on a 'first come/first serve' basis. Available from as little as £3 per can delivered - details of the range and pack sizes available here www.flavourly.com/originals. All packs include a Flavourly magazine and an artisan snack.



Black, el payaso

By Pablo Sorozábal, libretto by Francisco Serrano Anguita

Cervantes Theatre at the Arcola Theatre, then at the Cervantes Theatre, Southwark until 24th September

Review by Patrick Shorrock

Spanish composer Pablo Sorozábal (1897-1988) is barely known in Britain, neither is the distinctive genre, the zarzuela. Yet the Grimeborn Opera Festival curators definitely knew what they were doing in presenting the UK premiere of *Black, el payaso* (Black, the Clown). Blessedly free of the usual operetta clichés, the piece is pure delight. There is a lot more to [zarzuela](#) than operetta with castanets.



Sorozábal should take a lot of the credit, helped by an interesting plot and libretto, fine performances, and an effective production. Even in a reduction for piano and violin, his quirky score is extremely attractive, music to please an audience in a refreshingly sugar-free kind of way: peppery olive oil rather than Viennese whipped cream.



However, there is an underlying seriousness that conveys the feelings of the characters with conviction without ever losing its lightness of touch.

Two clowns – called Black and White – are performing in a Parisian theatre. Black plays a song on his violin that causes an exiled Princess in the audience to faint. By Act 2 the clowns have returned to their native Orsonia, where White has become First Minister and Black is about to take the throne and marry the Princess. This all probably felt a lot more subversive at the 1942

premiere at the end of the Spanish Civil War and the start of the Franco dictatorship.

Black El Payaso is an unusual piece able to provide delightful entertainment and intertextuality at the same time, with a song as a major plot point and a direct quote from *Pagliacci* about melancholy clowns. The clowns' references to audiences barely able to afford ticket prices seemed particularly topical.

Perhaps this can be the first of more zarzuelas.

Read Patrick Shorrock's review at www.markaspen.com/2022/08/05/black-payaso

Photography by Elena Molina





Midsummer Mechanicals

by Kerry Frampton and Ben Hales, after William Shakespeare
Shakespeare's Globe at the Sam Wanamaker Playhouse

Midsummer Mechanicals feels like the most Shakespearean show I've ever seen at the Globe. The Sam Wanamaker Playhouse encloses you, Tardis-like, and whisks you away from the modern Bankside, as young families arrive with none of the baggage, and all of the enthusiasm, for a wild, gripping, hilarious, anarchic show in which they, too, can play their part.



Kerry Frampton is heavily invested in this show as co-writer, co-director and actor. As Bottom, she takes the space and makes it her own to command - deftly weaving the audience into the show.

Frampton is brilliantly supported by Melody Brown as Patience Snout. As a foil to Bottom's self-importance, Patience gives merry licence to the audience to laugh. Jamal Franklin's nervy Quince and Sam Glen's "call-my-agent" turn as Flute create a brilliantly balanced quartet, with energy levels that simply crackle.



Children love this show. They love the jokes about being actors. They love being told to use their imaginations. They love the physical comedy (Flute casting a spell on Bottom is a stunningly well sold bit) and the wordplay.

For an older audience there is plenty of fan service - the quoting and misquoting of Shakespeare's own lines, the meta commentary on the ending *A Midsummer Night's Dream*, and an exit, pursued by a bear.

If you want a joyful, warm-hearted take on drama as Shakespeare understood it, then see this show. If you want a hilarious, absorbing introduction to Shakespeare to inoculate the 5-11 year olds in your life against future Bard-phobia, then see this show. And if you like bottom jokes, pratfalls and two hours of fun then please, I implore you, see this show.



Read Emma Byrne's review at www.markaspen.com/2022/08/08/midsum-mechs

Photography by Manuel Harlan



Sense and Compatibility by Nina Schlautmann and Sarah Tiplady

It's Only Funny with Stage Directions by Laila Sajir

SchlautladyINK and 2001Theatre Company at Etcetera Theatre, as part of the Camden Fringe, then on tour.

An actor paces the stage nervously. Intriguingly, wooden stools, an orange suitcase and toilet seats are props brought onto the stark set. Detailed sketches, ironic images of interview rooms and supermarkets are projected as backdrops. Yet, even bereft of these things, the sharp performances and dialogue would have dressed the set.



Layering role-playing from strippergrams, pirates and babies to accountants, hairdressers and multipolar, a power game shifts between two women with razor-sharp precision in this two-handed piece, *Sense and Compatibility*. Well written by the two actors, Nina Schlautmann and Sarah Tiplady, whose rapport is genuine and insightful, the acting achieves the right balance of moods in a rocky relationship.

Pseudo-interviews and other confrontations, real or otherwise, are tight and intriguing. Skilled actors, moody lighting and sound, and the exquisitely detailed art background takes us to the final layer. Climaxing in one sentence, they reveal everything about themselves.

It's Only Funny with Stage Directions, a one-woman play, performed with conviction by author Laila Sajir, and with intelligent and realistic direction by Amelia Kingsnorth, is strongly written and has genuine poignancy in abundance.

On a scattered set, on the morning after the night before, a cloud self-loathing hangs over Manal. Torn between getting her lover out her flat and preparing a meal to end the daily Ramadan fast for her strict Muslim family who are due to visit, her frustration is palpable.



Although earlier subdued projection loses significant (and humorous) points during the build-up, as she begins to relax she makes full use of the intimacy of the venue, confronting her audience with eye contact as she challenges with uncomfortable statements.

Then, in this demanding role Sajir is sad, funny, empathetic, and convincing.

Read Heather Moulson's review of *Sense and Compatibility* at

www.markaspen.com/2022/08/13/sense-and-compatibility

and of *It's Only Funny with Stage Directions* at www.markaspen.com/2022/08/19/only-funny

Imagery by Alice Genet and by Isha Shah



Three

by Christie Peto

Dangerosity at the Canal Café, Paddington. Part of the Camden Fringe

Walking into the Canal Theatre Café is akin to walking into the Kit Kat club in pre-war Berlin, but without Sally Bowles. An opulent setting with round tables, an air of splendour, and an alluring proscenium arch stage meets the eye.

The two hander ninety minute drama, *Three* is well-crafted, the central figure being played by the writer, Christie Peto, alongside Patch, played by Hannah Harquart. The latter role represents an alter-ego, mentor or possibly guardian angel. Harquart covers all three of these persona with energy and gusto and strong stage presence, while Peto gives an honest and sincere account of her breakdown and other mental health issues. The writing is relevant and identifiable, with wit and understanding.

Peto, after a coffee throwing incident at work, is recovering or at least coming to terms with herself. Under the shadow of talking to 'Susan' or her mother on the phone, she reflects on the pointlessness of allegedly comforting things – candles, music and bathing. Meanwhile her mentor cum co-star confesses to her own exhaustion and how her resources have run dry. There are some zippy one-liners in this exchange and a strong rapport between the two performers.

The simplicity of the piece, such as comparing one's messy bag to a messy mind, and questioning what is good for one's soul is nicely done. A silver cloud appears as a first date promises potential fulfilment, despite the long journey ahead. Then Peto is finally able to talk to 'Susan' on the phone. The ending is optimistic and strong.

Three sends out hope and support to similar sufferers and is wittily compassionate.

Read Heather Moulson's review at www.markaspen.com/2022/08/21/three

Photography courtesy of Dangerosity



OPEN DAY at the MARY WALLACE THEATRE on SATURDAY, SEPTEMBER 3rd

The Mary Wallace Theatre is flinging wide its doors to welcome you to their Open Day on the afternoon of Saturday, September 3rd when members of the Richmond Shakespeare Society will be happy to guide you round the building. From foyer and bar through to the auditorium, stage, backstage, workshop and scenery store, wardrobe and dressing rooms - all will be revealed while you hear about the history of the building and current and future productions.



If you have ever wondered about the hidden mysteries behind the glamour of the Mary Wallace stage do join us here between 12 noon and 4pm on the 3rd. You will be warmly welcomed - find us on Twickenham's Embankment, between St Mary's Church and the Barmy Arms.

www.richmondshakespeare.org.uk



The Turk's Head, St Margarets, to host Event Director of the TCS London Marathon

[The Turk's Head in St Margarets](#) is cementing its position at the heart of the South West London running fraternity by hosting an event with Hugh Brasher. On Wednesday 14 September 2022, the pub will be hosting a talk and Q&A session with Hugh – who is the event director of the [TCS London Marathon](#). The London Marathon was originally co-founded by running legend Chris Brasher, Hugh's father.

Hugh will be taking questions on a whole range of subjects from running the world's most iconic race to growing up in a famous sporting fraternity (his mother, Shirley, was winner of the French Tennis Open).

Tickets cost just £10, including a light snack, and the evening starts at 18.00 with drinks in the garden. They can be purchased via [The Turk's Head website](#). All profits are going to the [MDS Patient Support Group](#) at King's College Hospital. Myelodysplastic Syndrome is a rare blood cancer and Caitlin Limmer, who is hosting the evening, is the charity's patron.

Ollie Coulombeau, General Manager at The Turk's Head, said: "We are so proud to be involved with running in the local area, having worked with The Bearcat Running Club for 10 years. The Turk's Head 10k, which takes place every summer, has grown in size and stature over the years and The Turk's Head really is seen as the runners' pub in South West London.

"Playing host to Hugh Brasher just two weeks prior to this year's TCS London Marathon is amazing. It's very exciting and I can't thank Caitlin Limmer, founder of The Bearcat Running Club and West London Running Mayor, enough for allowing us to host this event. It will be a great night for runners and non-runners alike and will raise funds for a really important cause."

TRAVELLER'S TALES 130

AUSTRALIA THIS WAY

Doug Goodman uncovers a Dorset mystery

On frequent journeys between Twickenham and West Dorset I have passed a red signpost on the A31 east of Bere Regis and wondered why it differed from the standard black and white country signs. It is painted red and one of four in Dorset. It's called a fingerpost and of more benefit to horse riders, cyclists and walkers than motorists. Fingerposts exist throughout Dorset with over 1200 listed in the 1950s. Today just over 700 survive with one near Lyme Regis in a sad state of repair when I photographed it. Happily it has been restored to its original condition and is much admired. There's a Dorset fingerpost preservation society to look after them. The posts were erected at crossroads to help local travellers but the red one on the A31 had a special significance.



Finger Post Near Lyme Regis



The Red One

TRANSPORTATION

Since transportation first began and until its abolition in 1867 over 160,000 men and women were transported to Botany Bay in Australia as punishment in a penal colony for crimes such as: theft, receiving stolen goods, stealing fish, cows or pigs, taking ore from black lead mines and many others. For soldiers the acts of desertion, insubordination or mutiny were also punishable by a long spell in a penal colony. Those convicted in, for example, Dorchester faced a long walk in chains to Portsmouth before being incarcerated in prison ships which sailed to Botany Bay near Sydney. And this is where the red signpost became an essential guide for the prisoners' guards because they were unable to read; so red showed the way to a barn in a nearby farm where the human convoy rested for the night after a 13 mile journey. A post to which the convicts were chained still existed in the barn until the early twentieth century. A short distance east along the A31 in Winterborne Zelston is the Botany Bay Inn displaying a sign showing a sailing ship and the date 1777. Another inn well worth visiting is the World's End also on the same road and nearby. Whether this pub has connections with transportation of criminals I've not yet discovered but it seems likely that the jailers would need some refreshment and rest before heading to the port.



Inn Sign



Botany Bay Inn

THE JUDGE

In 1685 James II sent Judge Jeffreys and a team of legal experts to try some 1000 rebels who had fought with the Duke of Monmouth in an attempt to overthrow the monarchy. Courts were established in Winchester and in many towns in the south-west including Dorchester on September 1st 1685. Here, Judge Jeffreys resided in West Street and held the trials at the Antelope Hotel. In what became known as The Bloody Assizes he sentenced 251 rebels to be hung. Only 74 died but in a brutal way: the condemned were hung, drawn and quartered and their heads displayed on spikes around the town. The remainder were sent to the penal colonies in New South Wales where a very hard existence awaited the 'transportees'. Transportation was viewed by the authorities as a way of overcoming crowded prisons, poverty, overpopulation as well as being a deterrent to crime. It was also considered cheaper than providing support for the criminal classes in the UK. Judge Jeffreys returned to London after the series of trials where he was made Lord Chancellor by King James and gained the name 'The Hanging Judge'. He died in 1689 in The Tower of London imprisoned after the Revolution.

Modern signs are in place simply to guide us to our destination but some of the old ones do have an interesting history. No doubt there's a signpost museum somewhere but I've yet to spot a sign pointing to it.



World's End Inn

WIZ TALES - Bangladesh

Teresa Read



Last week the article in WIZ Tales featured India and Pakistan. Indian independence was granted in 1947 and the separate Muslim state of Pakistan that initially included present-day Bangladesh was created.

The Republic of Bangladesh was only established in 1971 but there has been a civilization in the region for four thousand years.

Bangladesh has a proud heritage. One well known writer, Rabindranath Tagore, who wrote poems, plays and novels in Bengali, won the Nobel Prize for Literature in 1913 and was knighted.



Bangladesh suffers regularly from substantial flooding caused by monsoon rains and melting snows from the Himalayas; in 1971 George Harrison organized a concert to raise money for the victims of Bangladesh floods. He also recorded a single called *Bangla Desh* which reached the top twenty in the UK pop charts.

If global warming brings about climatic change, sea levels could rise substantially; if this happens, low-lying countries such as Bangladesh could find much of their territory underwater.



World InfoZone Bangladesh: <https://worldinfozone.com/country.php?country=Bangladesh>

Richmond upon Thames students celebrate GCSE results

Richmond Council has shared their congratulations to students in Richmond upon Thames who received their GCSE results today. These are the first formally assessed results since 2019.

In contrast to the decline in results that can be observed nationally, this year's local GCSE results are broadly in line with those from 2021 and remain well above national averages across almost all measures.

Provisional figures show that 85% of pupils achieved a grade four or above in English and maths, which compares favourably to the pre-pandemic 2019 national average of 65%, the last time public examinations took place.

69% of students in Richmond upon Thames also secured a grade five or above, which is deemed 'strong' pass in both subjects.



The proportion of pupils who achieved the English Baccalaureate, which considers performance across a range of subjects including humanities, languages and science, also remains above historic national results.

CLlr Penny Frost, Chair of the Education and Children's Services Committee, said:

"Congratulations to everyone in Richmond upon Thames who picked up their GCSE results today.

The disruption to schooling over the past few years has been difficult for young people and the level of the results achieved are testament to the hard work of pupils, teachers and other school staff as well as the tremendous ongoing support offered by parents and carers. I wish them all the best in the future."

Waiting for exam results can be a stressful time for students. To support the mental health of young people in Richmond upon Thames young people can access [Kooth](#) is a free, safe and anonymous place for young people to find online support and counselling.

Coming to the Gtech on Saturday? Five things you need to know

Some tips to help you enjoy our game against Everton

Written by [Brentford Football Club](#)

Everton are the visitors to the Gtech Community Stadium this Saturday.

If you are joining us for our second home game of the Premier League season, here is everything you need to know...

Food and drink offers

Supporters who arrive early will be able to make significant savings on food and drinks with our Early Bird offers. Look out too for the new 'bundle' offers if you miss out on the Early Bird deals.

Those with the *Too Good to Go* app can also pick up a surprise bag of discounted food at the end of the match – and help us limit our food waste. Download the app to get started and collect your bag after full-time*.

The ground will be open from 1.30pm for season ticket and match ticket holders and 12.30pm for premium areas and The Dugout.

**Due to the last-minute nature of this offer, we are unable to offer vegetarian-only bags.*



Stadium policies – a few reminders

Outside of the West Stand and S100 in the South Stand, the Gtech Community Stadium is an **all-seater arena**.

Persistent standing will not be tolerated outside the safe standing areas to ensure fan safety and an enjoyable experience for everyone.

If you and your group are based elsewhere in the stadium, but prefer to stand and want to explore a possible move to the West Stand for future games, please get in touch with the Box Office.

Reporting discriminatory abuse

We are committed to ensuring a welcoming and inclusive environment for all our supporters.

If you witness or experience any behaviour in the stadium that you believe falls below the standard of behaviour that you would expect, we encourage you to report it at the game if possible.

Please report what you see or experience to any of our matchday stewards, or text **'BFC'** followed by your message (including your seat location) to **62277** and our Operations Team will be notified. Alternatively, you can email report@brentfordfc.com at any time.

Premium Season Ticket Holders - bring your lanyard on Saturday

Please remember to bring your lanyard from last season to gain quicker access to the stadium. If you have both your season ticket card and lanyard, you can enter via either Entrance B or C – otherwise, you need to enter via Entrance C only.

Security – it's a team game

And finally, while you are at the Gtech Community Stadium, if you see anything at all that doesn't seem right, trust your instinct and report it to the nearest steward. Your actions could save lives.

Enjoy the game!



England men's sevens squad named for LA tournament

Head coach Tony Roques has named his England men's Sevens squad for the final leg of the HSBC World Rugby Sevens Series in Los Angeles (27/28 August) and live on [World.Rugby](https://www.worldrugby.com)

Drawn in Pool D, England take on Scotland, Kenya and Samoa on day one.

Former England and Team GB captain Tom Mitchell returns for his first England sevens appearance since 2020 while Ethan Waddleton is also back with the group.

Freddie Roddick captains the side for the first time as Alex Davis continues his rehabilitation from injury.

Roques said: "We're really looking forward to playing out in LA for the final leg of the 2022 World Sevens Series.

"We're delighted to welcome Tom Mitchell and Ethan Waddleton back to the group.

"Tom has been in and around camp in the lead up to the Commonwealth Games and brings a wealth of experience into a young group having competed in two Olympic Games and two Commonwealth Games already so we know the capabilities he has on the pitch and around the group.

"Ethan is a top quality player that also represented Team GB in Tokyo and brings his vast experience on the sevens circuit.

"Freddie (Roddick) epitomises the values and behaviours we hold dear as a programme and thoroughly deserves his opportunity to captain England in our last appearance on the World Series.

"This is our final tournament before the World Cup and we want to ensure we keep trying to build, learn and grow as a group."

England men's Sevens squad

Jamie Adamson

Api Bavadra

Jamie Barden

Tom Bowen

Blake Boyland

Max Clementson

Tom Emery

Will Homer

Charlton Kerr

Tom Mitchell

Calum Randle

Freddie Roddick (C)

Ethan Waddleton

Schedule

Saturday 27 August

England men sevens v Scotland men sevens – KO 10.04 local time/18.04 UK time

England men sevens v Kenya men sevens – KO 13.10 local time/21.10 UK time

Samoa men sevens v England men sevens – KO 16.43 local time/00.43 UK time (Sunday 28 August)



Premier 15s enters exciting next stage of tender process

The Rugby Football Union, (RFU) is pleased to announce that the new Premier 15s league is now entering the next stage in its tender process with the issue of the Request for Proposals (RFP) on Monday 5th September 2022.

The RFP will be issued to all clubs who formally responded to the Expression of Interest, which closed on Friday 12th August 2022 and the deadline for the submission of responses to the RFP is 28th October 2022 at 1700.

Alex Teasdale, head of women's game at the RFU commented: "This is a really exciting phase of development for the next cycle of the Premier 15s league.

"All clubs who responded to the formal Expression of Interest will now set out their approach for the next cycle of Premier 15s and provide further detail around how their club will deliver against the criteria as set out in the RFP and support the delivery of a progressive league both on and off the pitch.

"Within the RFP there is an option for those responding clubs to meet with the RFU during September and October to discuss the process and any queries they have regarding this stage.

"We are looking forward to receiving the responses to the RFP and progressing the development plans to ensure we deliver a robust platform and ensure the next cycle of the Premier 15s continues to grow the sport at every level."

By 22nd November 2022 a Selection Panel, comprised of representatives of the RFU and sport specialists independent of clubs involved in the process, will evaluate all the responses to the RFP and subsequently create a shortlist of clubs. Those shortlisted clubs will then present their approach for the Premier 15s to the Selection Panel at agreed times between 28th November and 7th December.

Subject to any appeals, all shortlisted clubs will be notified of the Selection Panel's decision on the inclusion of clubs in the next cycle of the Premier 15s by the end of December this year.

An announcement will be made in Spring 2023 celebrating the successful clubs who will compete in the Allianz Premier 15s from the 2023/24 season.

The timeline for the next stage of development is listed below:

5th September 2022: RFPs issued to interested clubs

September – October 2022: Opportunity for interested clubs to meet with RFU

1700 hours, 28th October 2022: Deadline for responses to RFP

By 22nd November 2022: Selection panel will have evaluated RFP responses and a shortlist of clubs created

Between 28th November and 7th December 2022: Shortlisted clubs to present responses to RFP to Selection Panel

End December 2022: All shortlisted clubs notified of Selection Panel results, subject to appeals

Spring 2023: Participation agreements issued to successful applicants



RFU launches participation campaign to reboot community game

The RFU has committed close to £1m of additional funding and resource to support the community game as it continues to rebuild after the pandemic.

The increased support is based on a whole package of measures targeting areas of the game most affected by the enforced 18-month break during Covid.

While age grade rugby and the women's game have bounced back well, fewer games were played by men's teams below first XV level last season.

The RFU has created a nine-point plan to address these challenges this season, which includes increased support at national, regional, and local level. Further details are available [here](#)

At national level, the RFU today launches its **'Play Together, Stay Together'** campaign to drive participation among two key playing groups – 17-22-year-olds in the men's and women's game and male social players aged 30+. The campaign will remind players of everything they love about rugby, just as England prop Joe Marler does in his inimitable style [here](#).

A focal point of the 'Play Together, Stay Together' campaign will be the annual **'Pitch Up For Rugby' weekend on 17/18 September**, supported by The National Lottery, when clubs across the country will host events to celebrate the new season.

The RFU is redeploying coach developers to provide targeted practical support to around 100 clubs nationwide who need extra help to retain players. The governing body will also provide [guidance and resources](#) for transitioning players from age grade rugby into adult rugby.

An enhanced ['Game On'](#) framework will give teams even greater flexibility to complete matches this season, building on previous law adaptations that allow games to be played and results to stand when players and teams aren't able to field a full 15 or play a full 80 minutes.* More scrum options will be introduced, allowing more players to participate in and enjoy parts of the game they love.

At a more local level, the RFU funding will help increase playing and coaching opportunities, and also support students to find clubs close to their universities or to stay connected with their old clubs.

RFU Director of Rugby Development, Steve Grainger, said: *"During the pandemic we've seen a decline in the number of games being played in the adult men's game, while the women's game has stayed flat at a time when growth was planned. Both areas remain extremely important to us. While we are confident in our planned interventions in the women's game through Allianz Inner Warrior player recruitment campaigns aligned to the Rugby World Cup, it's really important that we act now to address the immediate challenges we are seeing in the men's game.*

"We have already announced the biggest changes in 30 years to the men's league structure to better suit players' lifestyles. The package of measures confirmed today are more targeted and immediate in nature, designed to have an impact on player retention in the first half of the season.

"We hope the whole rugby community will get behind 'Play Together, Stay Together' as the game works together to encourage more players back to their local clubs, and we thank The National Lottery players for again supporting our national participation campaign."



THAMES WATER'S DAILY WASTE SAME AS HAVING A HOSEPIPE ON FOR 73 YEARS - GMB

You could have had a hosepipe on constantly since before the Queen was on the throne and you still wouldn't have used as much as Thames Water wastes in 24 hours, says GMB Union

Thames Water wastes the same amount of water as having a hosepipe on for more than 73 years – every single day.

The company today [24 August] enforces a hosepipe ban on 15 million customers due to droughts.

But due to Thames Water's creaking infrastructure, it loses 635 million litres in leaks every single day.

That's enough to have a hosepipe on for 73 years, fill 245 Olympic sized swimming pools or fill 8 million baths.

Last year Thames Water handed its directors more than £4 million, with the highest paid director trousering £1.5 million – up 67 per cent from the year before.

GMB has long campaigned for water to be brought back into public hands.

Andy Prendergast, GMB National Secretary, said:

“From today, 15 million people across the South East can no longer use their hosepipe.

“Meanwhile every single day, Thames Water wastes enough water to have a hosepipe on for more than 70 years.

“You could have had a hosepipe on constantly since before the Queen was on the throne and you still wouldn't have used as much as Thames Water wastes in just 24 hours.

“Instead of spending money to fix the leaky infrastructure, they're showering directors with eye-watering sums.

“It's jaw-dropping incompetence and greed.

“Privatising water has been a disastrous failed experiment, it's time to bring this essential natural resource back into public hands.”



Multi-country outbreak of monkeypox

External Situation Report 4, 22 August 2022

Highlights

* During the week of 15 to 21 August, the number of cases reported in the Region of the Americas shows a continuing steep rise, confirming trends seen over the last several weeks. Globally, after four consecutive weeks of increase, the number of monkeypox cases reported declined by 21% overall during the same week (n=5907 cases) as compared to the previous week (n=7477 cases). This decrease may reflect early signs of a declining case count in the European region, which would need to be subsequently confirmed.

* On 8 August, WHO convened a meeting of two WHO Collaborating Centres for orthopoxviruses and other experts in poxvirology and viral evolution to consider the naming of monkeypox virus (MPXV) variants. Henceforth, the Congo Basin or Central African clade will be referred to as Clade I; the West African clade will be referred to as Clade II, with subclades IIa and IIb, the latter referring to the variant that is predominant in the multi-country outbreak.

* WHO has updated the interim guidance on vaccines and immunization for monkeypox. Updates include a clearer emphasis on the groups at risk of monkeypox for consideration for preventive vaccination, and updated terminology for pre- and post-exposure vaccination. To reduce confusion with the terms used in the management of HIV, the changes include using primary preventive (pre-exposure) vaccination (PPV) rather than pre-exposure prophylaxis (PrEP), and post-exposure vaccination (PEPV) rather than post[1]exposure prophylaxis (PEP).

Read the [Report](#) in full

More about the monkeypox outbreak 2022: [here](#)

All DONs related to this event: [here](#)

More about monkeypox: [here](#)



**World Health
Organization**

303 editions of the **Twickenham & Richmond Tribune** online - Lots to read: News, Reviews, History, Sports and On-going Sagas in the Borough of Richmond upon Thames



Half Page

Quarter Page
Landscape

Quarter Page Portrait

Eighth Page

Eighth Page
Landscape

Example advert sizes shown above

Thousands read The Twickenham & Richmond Tribune

If you are reading this you could be advertising your business with
The Twickenham & Richmond Tribune. Community rates are
available

Contact: advertise@TwickenhamTribune.com

View ad details at www.TwickenhamTribune.com/advertise

Contact

contact@TwickenhamTribune.com
letters@TwickenhamTribune.com
advertise@TwickenhamTribune.com



Published by:

Twickenham & Richmond Tribune (in association with World InfoZone Limited)

Registered in England & Wales

Reg No 10549345

The Twickenham Tribune is registered with the ICO under the Data Protection Act, Reg No ZA224725

©Twickenham & Richmond Tribune. All rights reserved. No part of this publication may be used or reproduced without the permission of Twickenham & Richmond Tribune. While we take reasonable efforts, this online newspaper cannot be held responsible for the accuracy or reliability of information. The views and opinions in these pages do not necessarily represent those of The Twickenham & Richmond Tribune.

[Terms & Conditions](#)